



## KINGDOM PHILATELIC ASSOCIATION

Fulton, Missouri 65251

*Kingdom of Callaway County—Mule Capitol of the World*

### The Bulletin April 2014

#### Meeting

The next meeting of the Kingdom Philatelic Association will be 7:00 p.m. Thursday, April 17, 2014 at the Court Street Methodist Church.

This month's circuits include 2 books of British North America and 2 books of France. There are three books of topicals which include; ships, Boy Scouts and Disney. The rest are an assortment of U.S. stamps.

This month David is going to show us a collection of Naval Covers. I will be particularly interested in this collection since I served aboard the Andrew Jackson in the 60's and picked up the adjacent cover then. David was also instrumental in getting the club members cachets when the USS Missouri was commissioned.



#### Silesia

At our last meeting Jon gave us a look at his collection from Upper Silesia. Most of us are so used to using the Scott Catalog, but again Jon emphasized the need to use the Michel catalog when dealing with Europe. Scott's does not provide the detail on the many varieties of European stamps.

At the meeting Jon finally gave us some indication of where Upper Silesia was. I believe he said it was just north of Eastern Silesia. Huh? Well that didn't satisfy me so I looked it up on Wikipedia. There it says Upper Silesia is south of Lower Silesia. Huh? Well, I give up! I'm so confused now.



But, anyway, listening to Jon and looking it up on the internet, collecting Silesia does sound interesting. Silesia is an area between Germany, Poland and Czechoslovakia. Consequently the area has bounced between those countries for centuries. You can collect Upper Silesia, Eastern Silesia, and Lower Silesia

Upper Silesia, a plebiscite territory at the time, began issuing stamps in April 1920. The first stamps were German Local Official Stamps for the state of Prussia overprinted with "**C.G.H.S.**" for government use in the plebiscite territory. C.G.H.S. stands for the French: *Commission de Gouvernement Haute Silesie*. There are a number of overprint varieties and this is where the Michel Catalog becomes important. The overprints can be horizontal or vertical, double print or inverted print.

## Stamp Shows

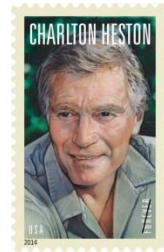
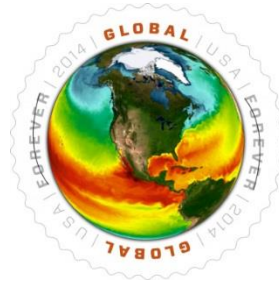
Unfortunately I had to miss the stamp shows and auctions last month. But, several of the members report that they were able to attend at least one and found something they were looking for. Even though I missed out last month I am going to have several more opportunities this summer. The following shows are scheduled for the St. Louis Area.

Greater Kansas City Show	April 26, 2014	Overland Park
St. Charles Spring Stamp Show	May 30 & 31, 2014	St. Charles
Mule Fest Precancel Show	June 6-7, 2014	Maryland Heights
E & D Stamp Auction	June 22, 2014	Kansas City
National Precancel Stamp Show	August 4-9, 2014	Maryland Heights
Perfins Club Annual Convention	August 4-9, 2014	Maryland Heights
National Topical Association	June 27-29, 2014	St. Louis Airport Hotel
Stratford Inn Stamp Bourse	2 <sup>nd</sup> Saturday each Month	Fenton

It has been a long time since we have had so many shows scheduled in the area. Great!

---

### New U.S. stamps scheduled For issue in April 2014




---

### Philatelic Dates

April 5, 2014	USPS issues 49c Forever Songbird commemorative booklet
April 7, 1850	Switzerland issues its first postage stamp
April 11, 2014	USPS issues 49c Forever Charlton Heston (legends of Hollywood) commemorative
April 12, 2007	USPS issues its first Forever Stamp
April 17, 2014	Kingdom Philatelic Association meeting, Fulton, MO
April 22, 2014	USPS issues \$1.15 Forever Ocean Surfaces Temperatures stamp
April 23, 1851	Canada issued its first stamp, 3c Beaver

Editor: Al White